

Drawing:the first steps

Border Lines



Correct



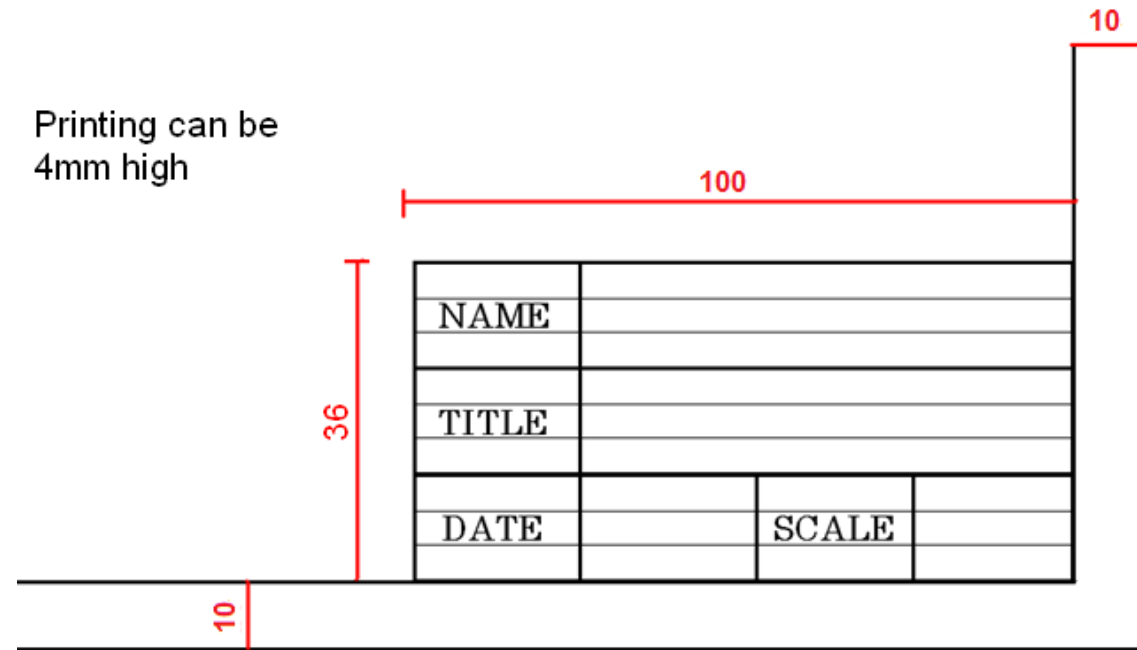
Incorrect



Incorrect

10mm border line all around finishing in a neat sharp corner

Printing can be 4mm high



Title Box

Pencils

- Softer pencils Grade B are used for sketching
- Harder Grade H is used for drawing with rulers
- A HB pencil should be used for printing text
- 2H or 3H for drawing lines
- Draw lightly until you are sure your line should be heavy
- In geometry construction lines must be shown

Printing Letters

- All printing should be uppercase lettering (ie. Capital letters)
- The printing must be the same size, neat with even spacing.
- Each letter should fit roughly into a square block with narrower letters taking up less space.
- Practice words common to your drawing such as :
 - PLAN TITLE DATE SCALE
 - ELEVATION END VIEW PLAN
 - ISOMETRIC SECTIONAL PLAN

Titles & Dimensions

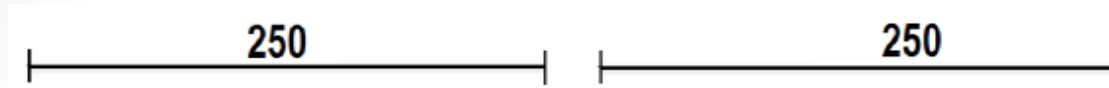
- Keep dimension lines away from the drawings.
- Keep the numbers on the same side of the dimension line throughout the page.
- Centre the numbers on each dimension line.
- Keep numbers the same height
- Use 3mm guide lines to help keep printing neat and uniform.

○ 1 2 3 4 5 6 7 8 9 10

○ 235 532 125 429 650 375

○ 20 40 50 200 1000

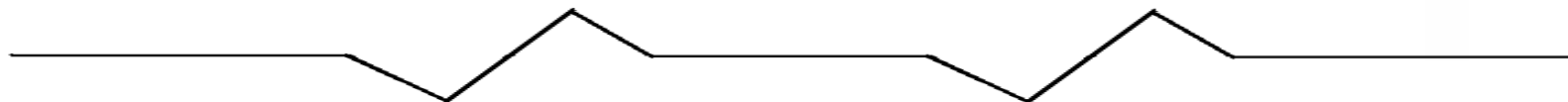
Dimension Lines



○ **Correct**
Centred on line

Incorrect
Off centre

- _____
- Thin light guide lines for construction lines and dimension lines
- _____
- Darker lines for finished lines and borders
- - - - - -
- Short dashes for hidden detail
- _ _ _ _ _
- Chain line for centre line



○ Break lines for showing material breaks

Main Assessment points in Drawing

- Border lines & Title Box
- Titles & Dimensions
- POC's, Construction lines
- Accuracy in Drawing
- Correct approach to Drawing Views.
- Orthographic as per standard practice
- Isometric overall heights & depths correct
- Geometry mainly construction lines methods