

A presentation of work from the students

Timber Product Technology

Dublin Institute of Technology





Eoghan Purtell

Drinks Cabinet in maple with traditional coopered doors and walnut burr veneered back. Carcase and drawer joints hand cut.

Eoghan Purtell Winner of the Pat Quinn Competition

Eoghan's Drinks Cabinet was judged by many to be the most outstanding piece for quality, craftsmanship, originality and his use of the traditional hand tools throughout the whole construction.



Cianán Mc Nally

Cabinet in oak with lattice work inspired by the Shanghai Stock Exchange incorporated into the doors. All joints such as dovetails in carcass and drawers and tenons in door were hand cut.

Jamie Black

This table with a walnut frame and birch plywood suspended cabinet has two crisscross metal rods running from each leg at the sides inspired by the Shanghai Stock Exchange.





Alex Byrne

Walnut Table with carved beech top. The top has a Celtic theme pattern carved into it. This table will be finished using liquid glass resin.

Vaulters Taurins

Oak Table with secret compartment hidden underneath the centre of the table top.



Páraic Mc Gowan

Oak Display Cabinet

constructed using traditional joints such as high and low shoulder on the door frame.



Barry Mc Cabe

Oak Display Cabinet with drawer hidden behind the bottom door rail.

Traditional cross having joint was used for the shelf and divider.



Robert Blake

Oak Cabinet with 2 doors, 2 drawers a number of different traditional hand cut joints were used in the manufacturing of this unit including mitred mortise and tenons on the door frames, dovetails on the carcass and drawers and stopped runners to the drawer sides.



Dan Finerty

Trinket Box with secret mitred dovetails and quartered matched veneer panel on top.

Jason Moran

Winner of the Cornerstone completion. Jason excelled in all four areas of this project. Beech Cabinet with drawer all joints hand cut. Mitred mortise & tennon door frame with diamond matched mahogany





Eric Donegan

This unusual curio is constructed from Walnut and Sycamore the dainty drawers are dovetailed together while traditional loose tongue is used to connect the 8 corners of the octagon. 2 separate pieces of glass with polished edges will be inserted into the doors.



Nick O Brien

Mahogany and Maple Display Cabinet. This unit would be used to display one of the hand tools. It has a glass front and top allowing people to view the tools from the front and top. This unit could be made in a larger scale with glass incorporated into the side panels as well to display more items.



John Barrett

Maple Trinket Box with pyrography of the “Tree of Life “ burned into the lid. Traditional hand cut dovetails were used in creating the carcass of the box.

A Joint Project between Construction & ArchitectureThe Display Cabinet.

A Collaboration between DT101-5 Architecture and DT169-2 Timber Product Technology students.

Students were tasked with designing a display cabinet to be situated in the foyer of Linenhall. The cabinet would have one of two purposes.

1: A Display Cabinet to display various traditional wooden hand tools donated by Pat Quinn to the Dublin School of Architecture.

Or

2: A Display cabinet to showcase the various trinket boxes and curio presses created by students from the Timber Product Technology programme.

These projects were designed and created using some of the tools donated by Pat Quinn to the Dublin School of Architecture.

This proved to be quite successful with students from both programmes sitting down and collaborating, discussing, sketching, researching and for the most part communicating with each other over six weeks trying to come up with different designs. The students found this collaborative learning and sharing to be a great experience.

In keeping with the wood theme the groups were given names of trees.



Ash



Beech



Cherry



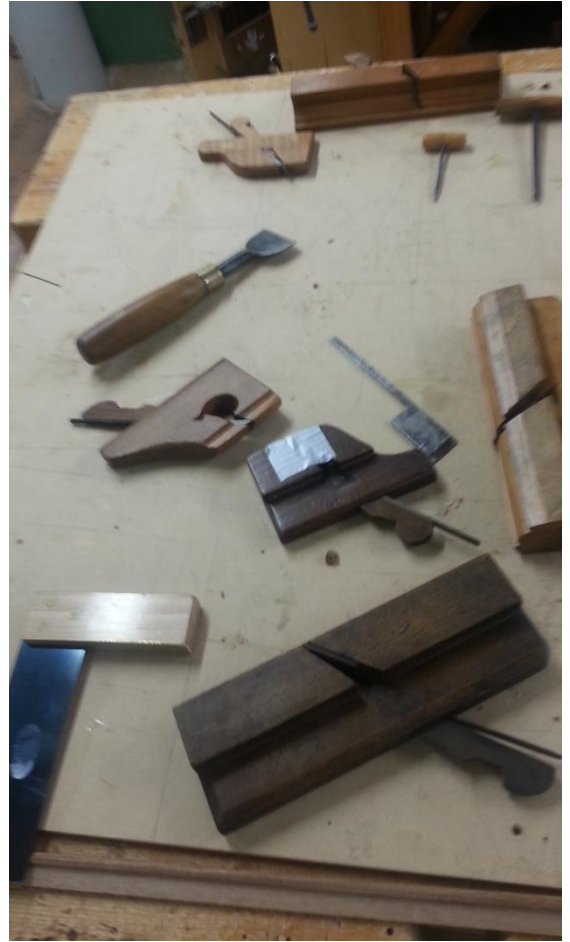
Oak

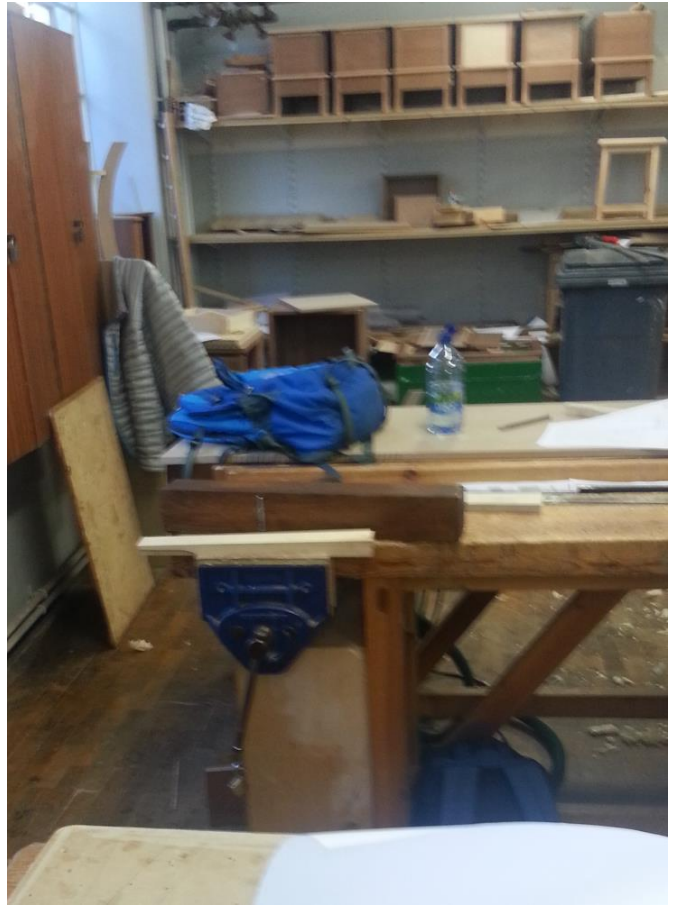
Coordinator Jennifer Byrne & Sima Rouholamin

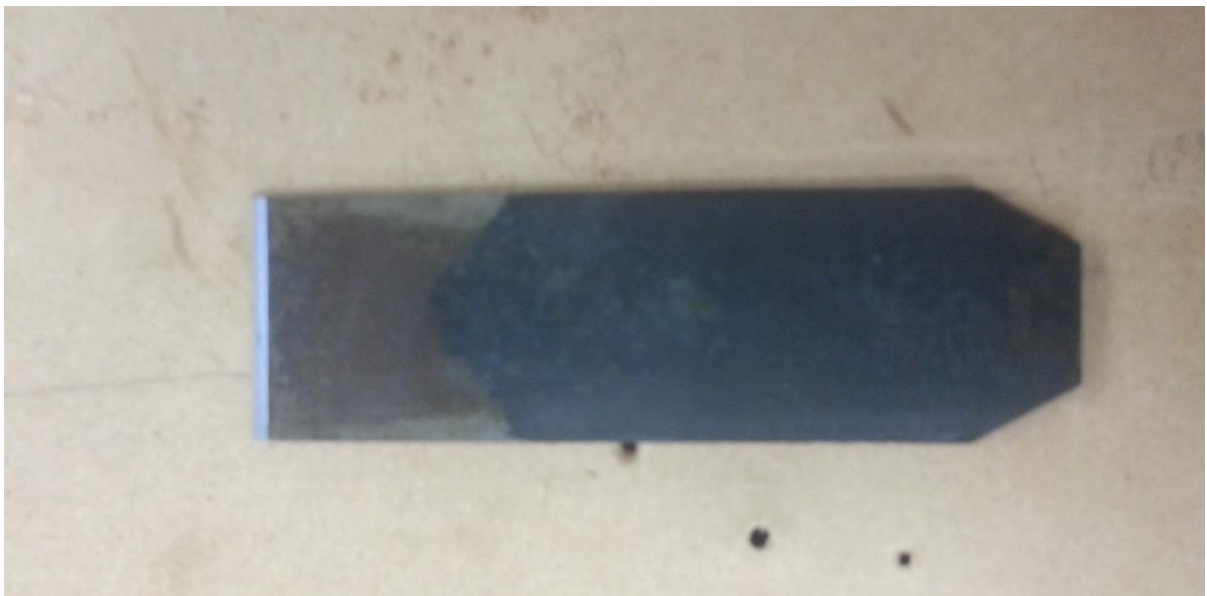
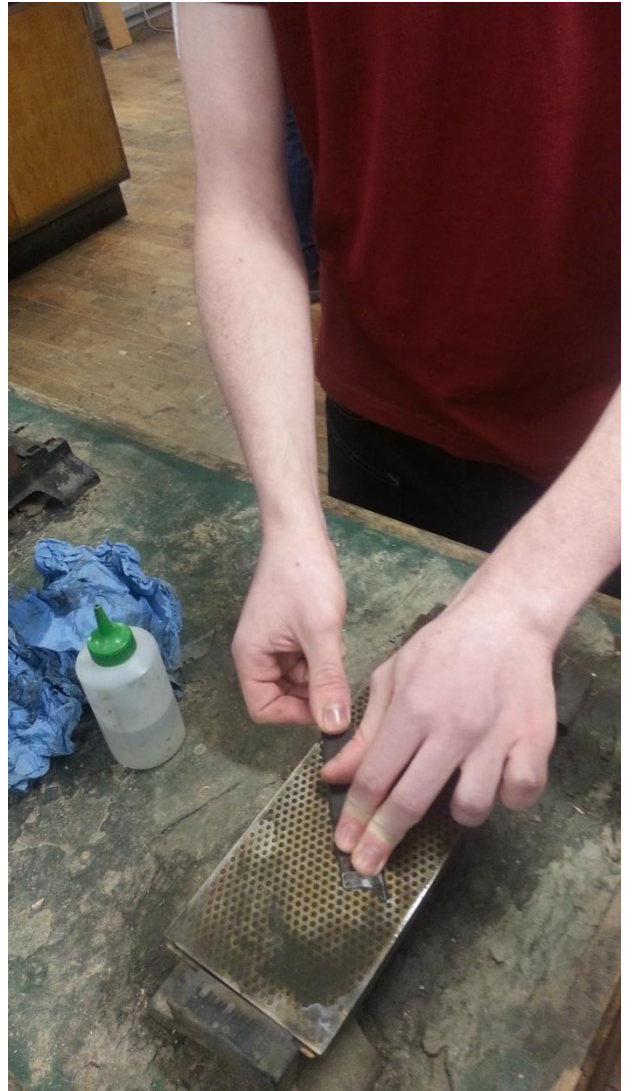
Aidan Ryan & Dominic Stevens

Students at work during the manufacturing stage of the Pat Quinn Competition



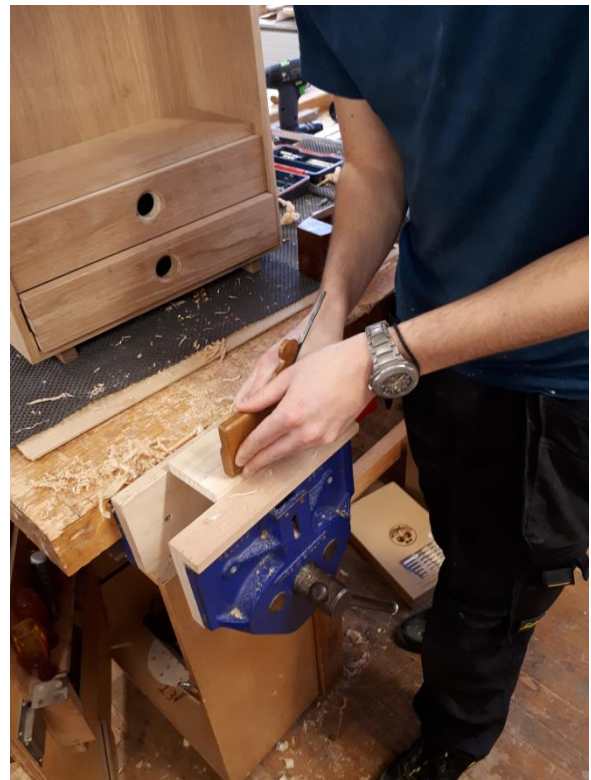
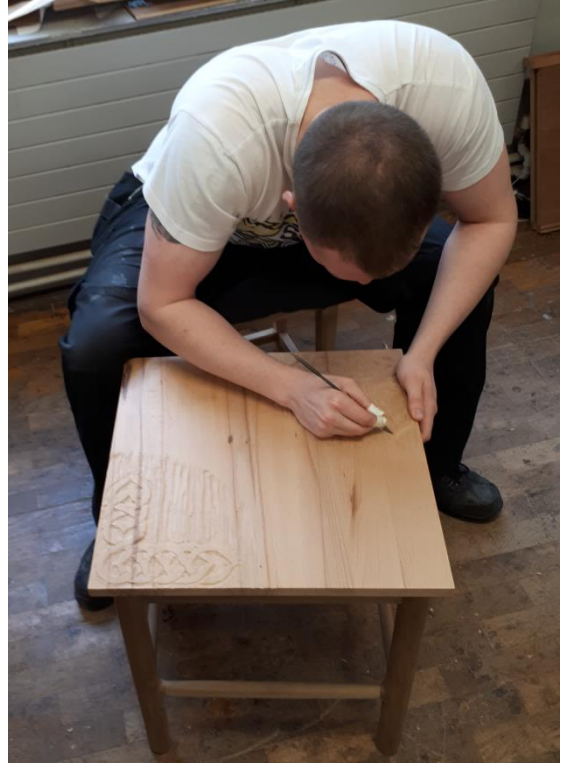












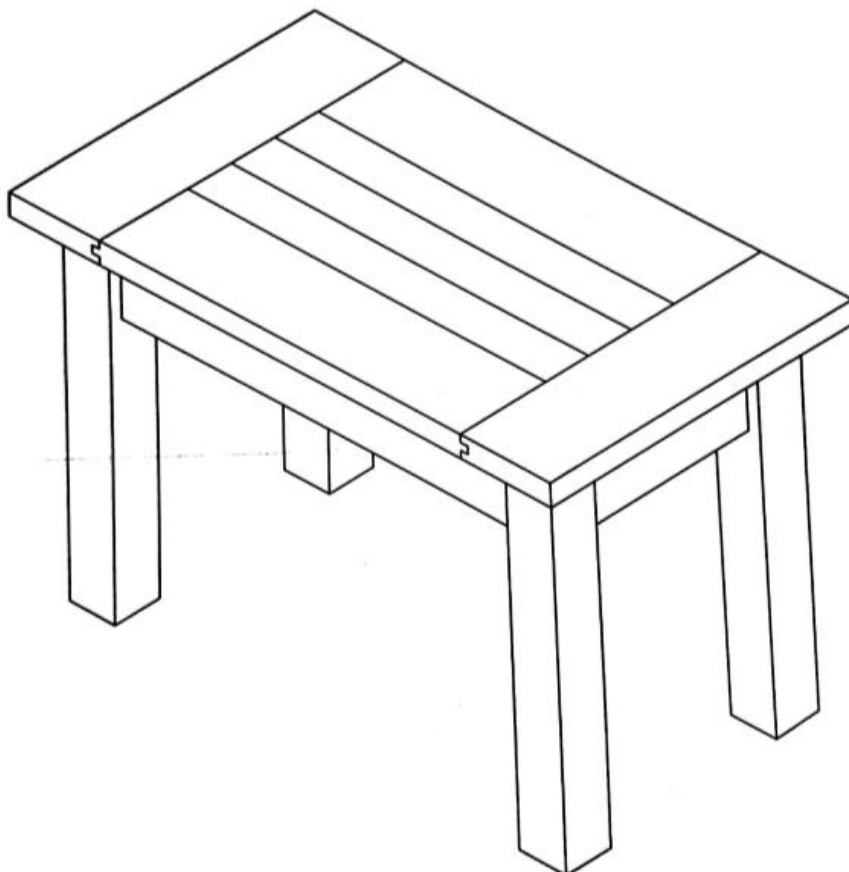
Extracts from Students work

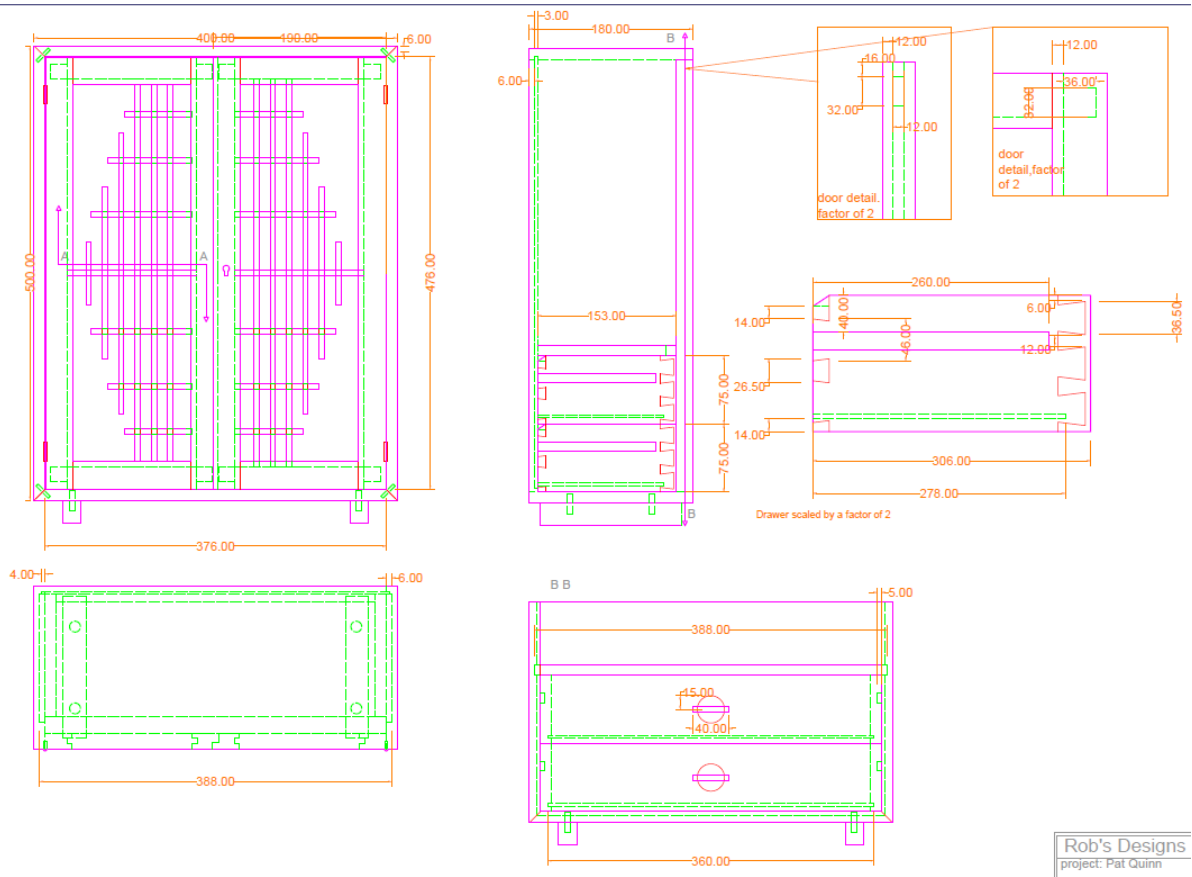
“In this assignment we are required to design and make a small artefact that uses the classic tools that were donated by Pat Quinn. The best project would be selected to be sent to Mr. Quinn as a thank you for the donation.”

“When we got the brief for this assignment I immediately thought of doing a table that incorporated both Canadian and Irish themes, this would be carved Celtic designs and some veneered designs of the Canadian flag.”

“I plan to incorporate traditional hand tools into the making of this piece where possible. This will include using traditional hand tools for marking out the piece, paring dovetails and hand planning down the ends of the tenons smooth to the surface. Using these tools will give me an insight into how they compare with their modern equivalent.”

The CAD drawing below is of a beautiful Oak table that has a secret compartment, one end of the table top slides off and the top pulls back to reveal a compartment in the centre of the table. This student made the table half scale as a prototype before he makes a full size table.





Rob's Designs
 project: Pat Quinn
 Drawing: orthographic
 Date: | scale:

