



Display Cabinet

Part 2

Job Description

- 1: A Display Cabinet to display various traditional wooden hand tools donated by Pat Quinn to the Dublin School of Architecture.
- Or
- 2: A Display cabinet to showcase the various trinket boxes and curio presses created by students from the Timber Product Technology programme.

Email from Brian Gillespie

Thanks very much for the invitation. That was a thoroughly enjoyable day. It was really interesting listening to the different ideas and solutions that the students had.

So what's the next move? Are we to wait on more material in the new year.

Email from Mark

- Cabinet designs.
- I would really like to incorporate elements of all three.
- I would like that the side dimensions of each would be consistent to allow for designs that would allow us to extend this, or to swap out parts over time.
- As you know, I particularly like the Mackintosh chair design. Not an original, I know, but designs based on that where someone could 'sit and read the paper' appeal to me.

Email from Mark

- Cabinet designs.
- Likewise, Group B appeals to me for its simplicity.
- If we would incorporate the seats from Team C into the Cabinet from Team B, with the end-cabinets' half-height from Team A.
- No, if you don't agree with that as an approach and want to go with a single 'winner' then go with the cabinet from Team B. I feel it encompassed the brief very well.

Email from Mark

- Reasons for this decision?
- Team B neither over-stretched themselves nor developed something too complex to manufacture.
- I think we have gotten over the fear of expensive curved glass by taking an approach that would use heated and formed perspex, but that is not a major issue. In any case, the simplicity of Team B's curved front on a simple case seems perhaps the most likely candidate.

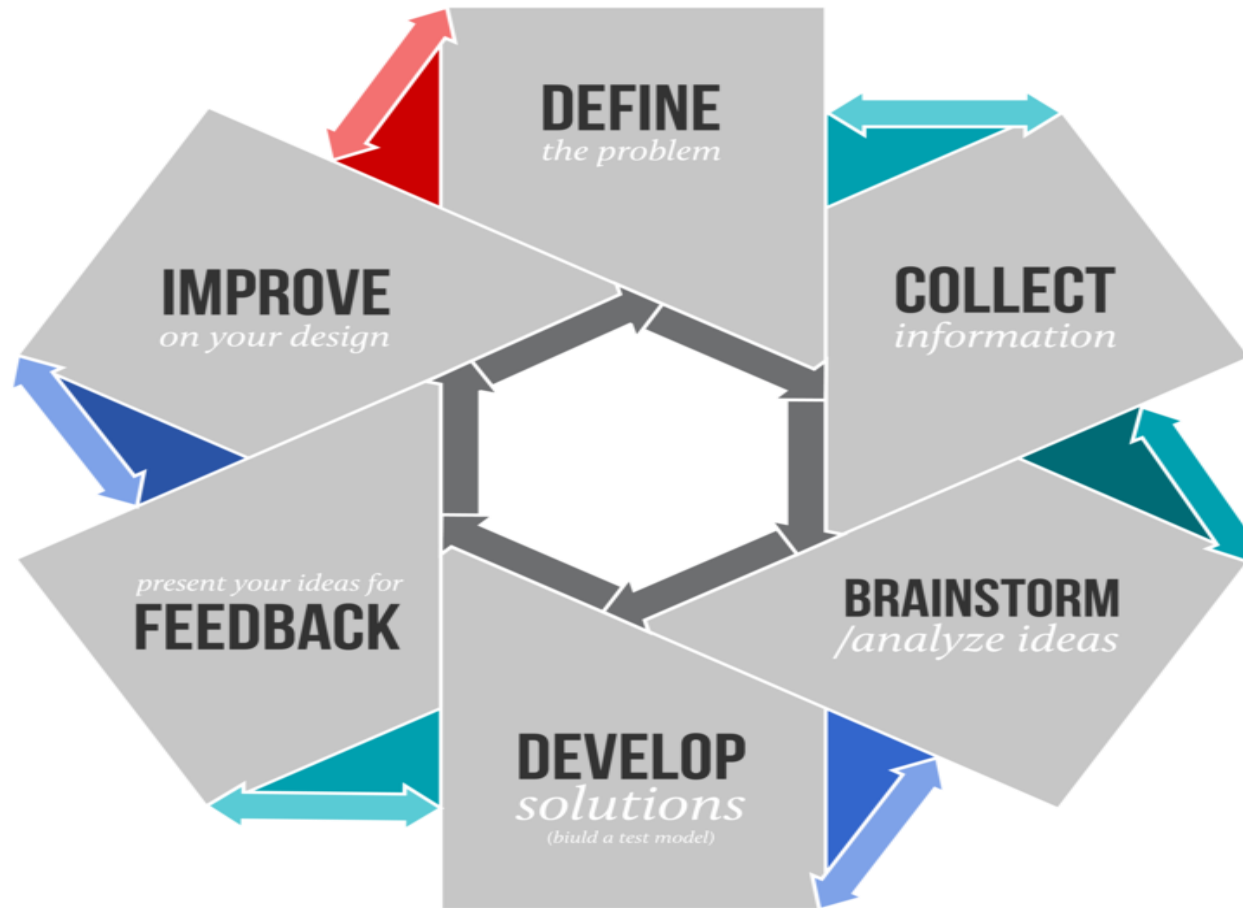
Email from Mark

- Reasons for this decision?
- I am aware that this also does not incorporate the podium, nor the head for the podium. If we are to incorporate that, as a front (like a Dalek) to the cabinet, then dimensions will need to be chosen so that the front of the main standing cabinet are such that the pedestal can slide into that while looking part of the whole design rather than a horny Dalek.
- I hope this helps.

My reply to Mark

- Does that help !!!!! yes Mark it contributes to a headache.

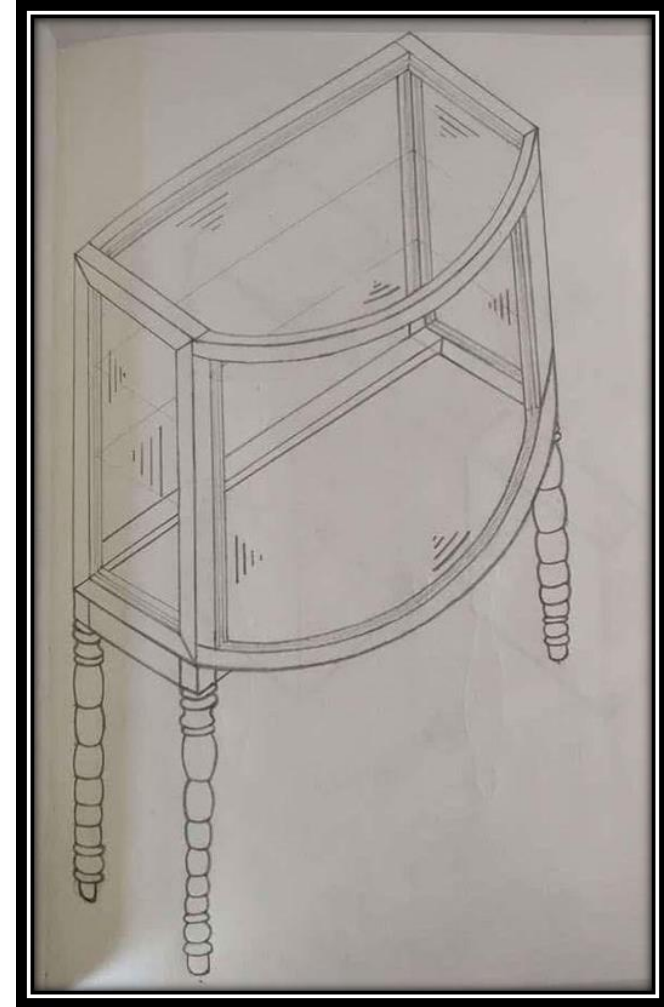
The Design Process



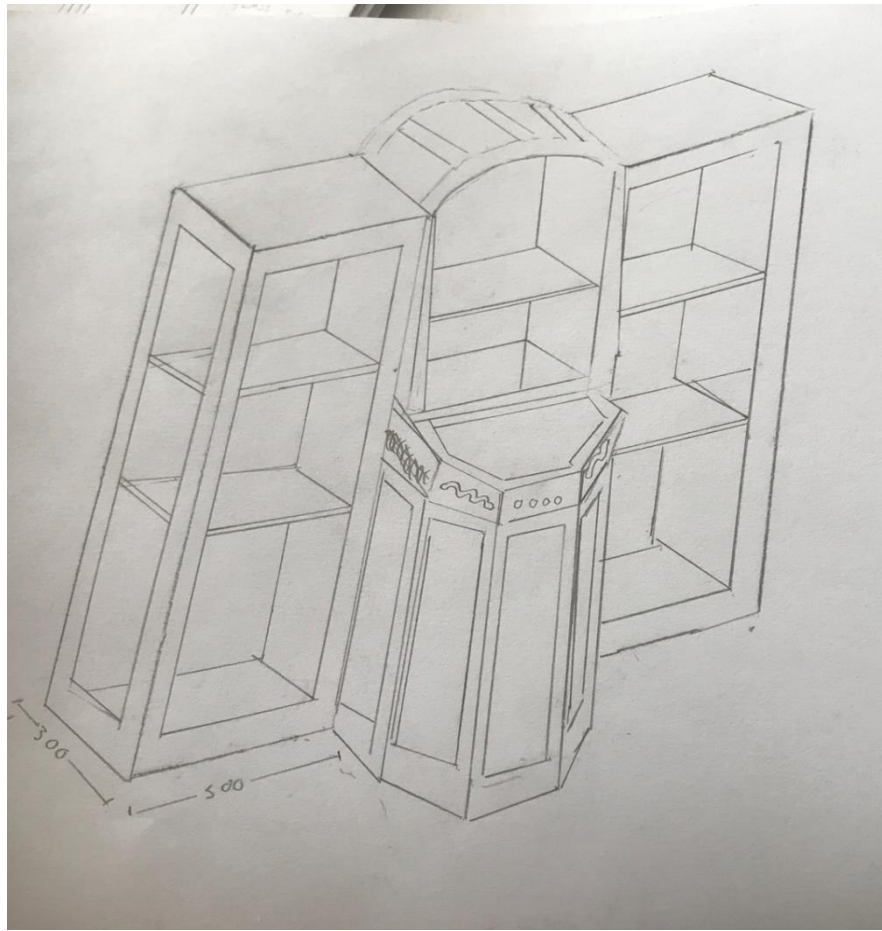
Team A : Connor Jack Gareth



Team B: Harry Elysia Stefan



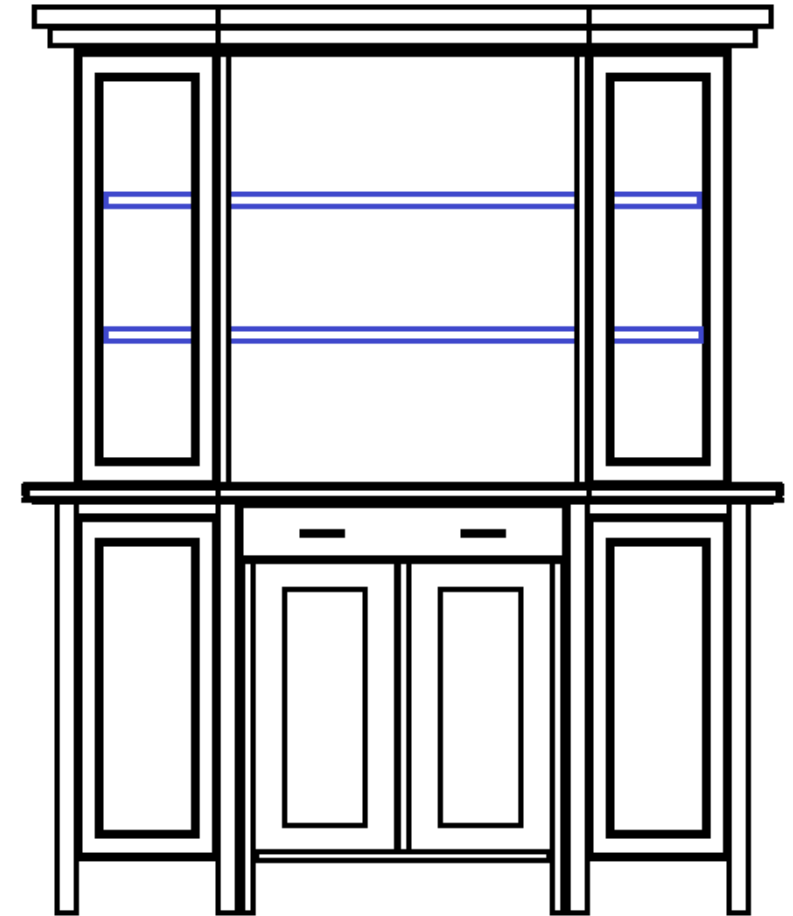
Team C: Derek Padraig James



Idea for combining all 3 designs

Display Cabinet made in three sections? Top section two glazed display units with middle section having curved glass.

Bottom section made like a pedestal desk with removable centre that converts into a podium.

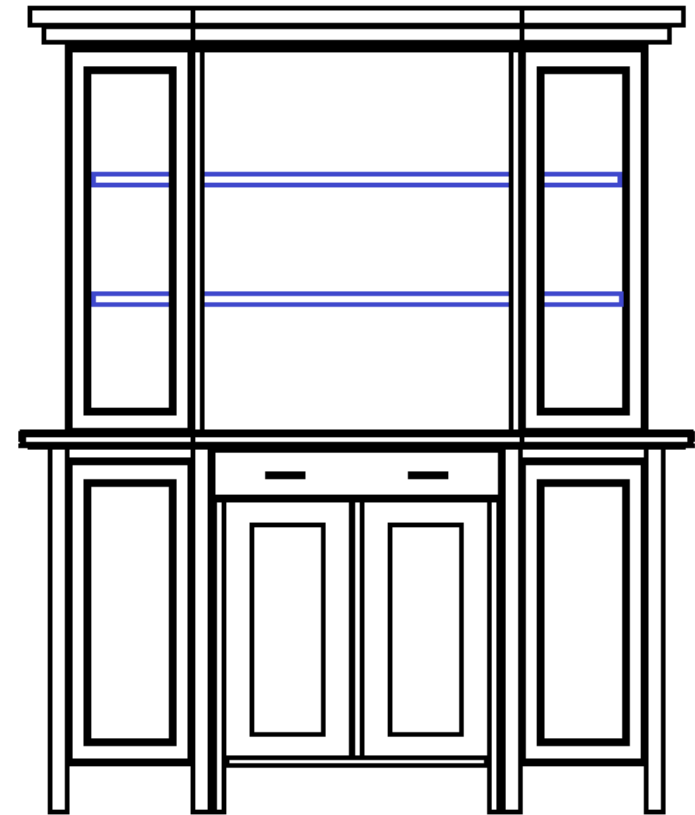


PMI

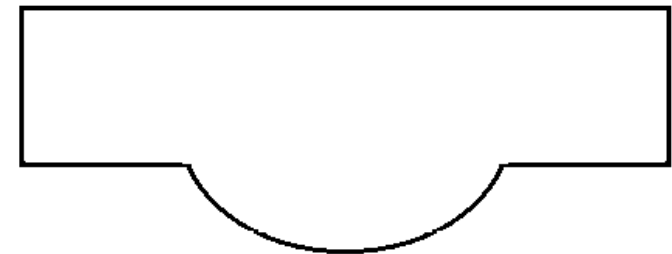
List the Positives

List the Minus

Look at both lists and list what would be interesting



ELEVATION



PLAN