

Restoring an Overmantel Mirror

Step by step.

Assessment

- Check over the item and assess the damage.
- Structural repairs should be carried out first.
- Veneers, replacement parts etc.
- Finish.

Assessment

- The Overmantel was old possibly 100 years.
- Would have been an expensive item to purchase at the time.
- Good quality bevelled mirrors.
- Mahogany used for front sections.
- It was missing its large bevelled mirror. (broken)



Assessment

It had been repaired a number of years ago both professionally and by a handyman.



Treatment

- It was also showing evidence of fresh woodworm holes. As adult beetles cannot bore into wood they often lay their eggs in old exit holes and loose joints.
- It is very important to treat all surfaces with woodworm killer at least 3 times before you start to dismantle.
- After you dismantle treat all internal areas.
- Sweep up and burn shavings, sawdust etc. in case eggs or larva remain.

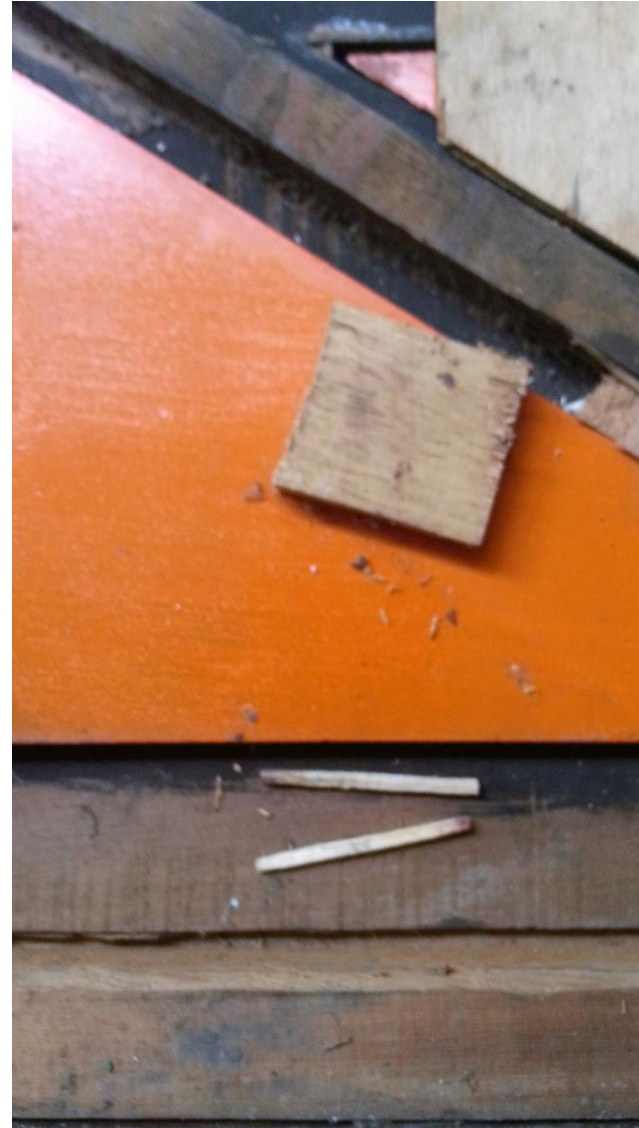
Dismantle

- Carefully remove the back



Dismantle

Try not to scratch mirror surface.



Dismantle

The previous repair job was not of good quality.



Dismantling complete

Stripped back to the frame.



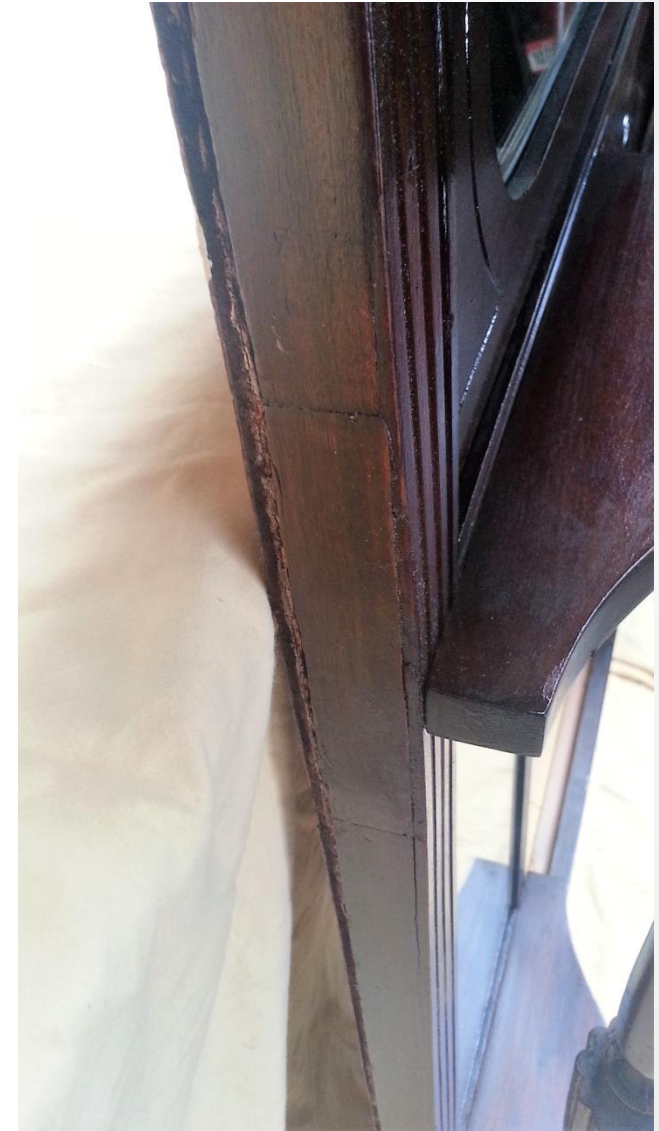
The frame was fractured so I fitted three metal plates as reinforcement two on the internal corner and another one on the back.

Repairing the veneer

Repairing the veneer.

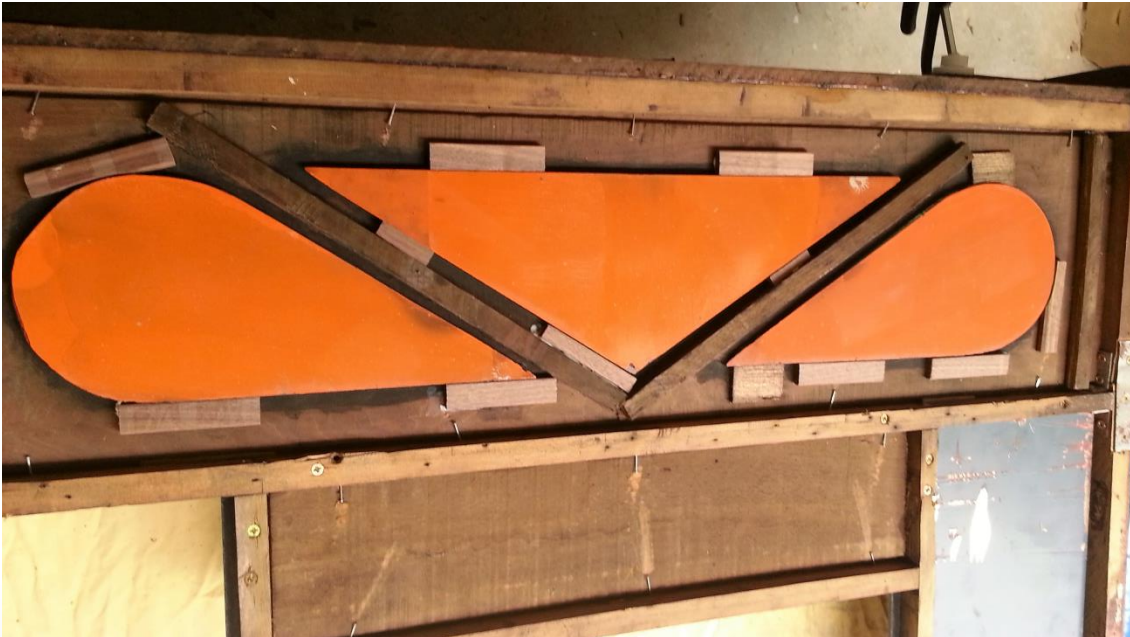


Chop away the veneer and carefully match in new veneer. Colour stain and polish to blend in with existing wood.



More Repairs

Replace wooden spacer blocks with new ones



Fill in any woodworm holes
Colour stain and polish to
blend in with existing wood.

More Repairs

- The patina builds up from years of dust and polishing causing the surface to appear darker than it is.
- Reviver used is
- 1/3 French Polish
- 1/3 linseed Oil
- 1/3 Methylated Spirits



Carved panel before and after applying a reviver coat

Finished Piece

- The patina is still intact.
- Even though this piece has been restored it should still show scratches, dents etc. these are signs of age and sometimes removing them can halve the value of the piece.

